



**ISOKINETIC  
MEDICAL GROUP**

**FIFA** | MEDICAL CENTRE  
OF EXCELLENCE

XXXIV ISOKINETIC CONFERENCE

FOOTBALL MEDICINE

**REACH THE TOP**

24<sup>th</sup>, 25<sup>th</sup> & 26<sup>th</sup> April 2027

Allianz MiCo - MILAN

BE THE EXPERIENCE

*Become Our Partner*



# Milan CAN'T BE DESCRIBED... IT HAS TO BE EXPERIENCED

It's the meeting point between sophisticated elegance and avant-garde architecture, where the majesty of the Duomo coexists with the skyscrapers of a future already present.

Milan is the world fashion and design capital, but also a historical treasure trove hidden among secret courtyards and ancient waterways. Let yourself be captivated by its energy, its iconic flavors and its vibrant cultural life.

MILAN IS WAITING TO INSPIRE YOU!





DISCOVER *Allianz MiCo*:  
THE LARGEST VENUE IN EUROPE  
IS READY TO WELCOME #ISOK27

---

In the financial and creative heart of Milan, in the shadow of the modern CityLife district, stands Allianz MiCo, an iconic structure, recognisable by its spectacular comet-shaped roof.

Proud to be ranked among the Gold Healthy Venues for its commitment to guaranteeing low environmental impact events, it is located in the city centre, and surrounded by numerous hotels, restaurants and green spaces.

# The Isokinetic CONFERENCE

## A WORLDWIDE ATTENDANCE

2500 participants coming from more than 85 Countries

## AN IMPRESSIVE SCIENTIFIC PROGRAM

550 speakers

105 scientific sessions

More than 600 lectures

## A MULTIDISCIPLINARY PROGRAM

Sports medicine

Orthopaedic interventions

Injury prevention

Joint replacements

Brain health

Bones and joints surgery

Women football

Regenerative medicine

Orthobiologics

Diagnosis

Performance optimization

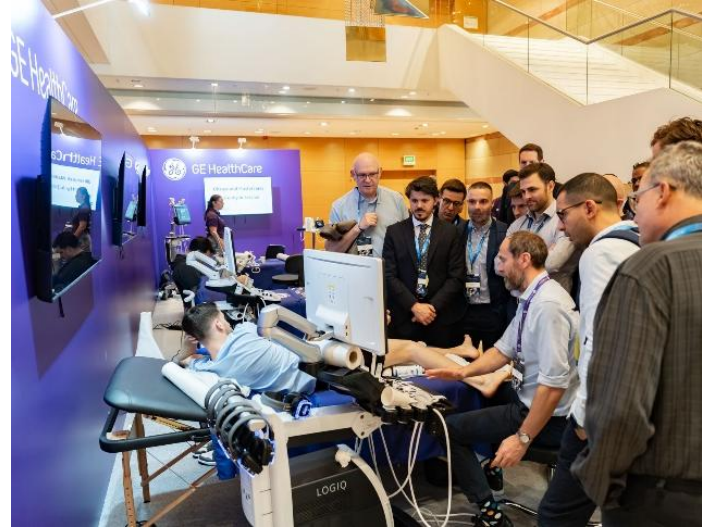
Artificial intelligence

Nutrition





*The Exhibiting Area*

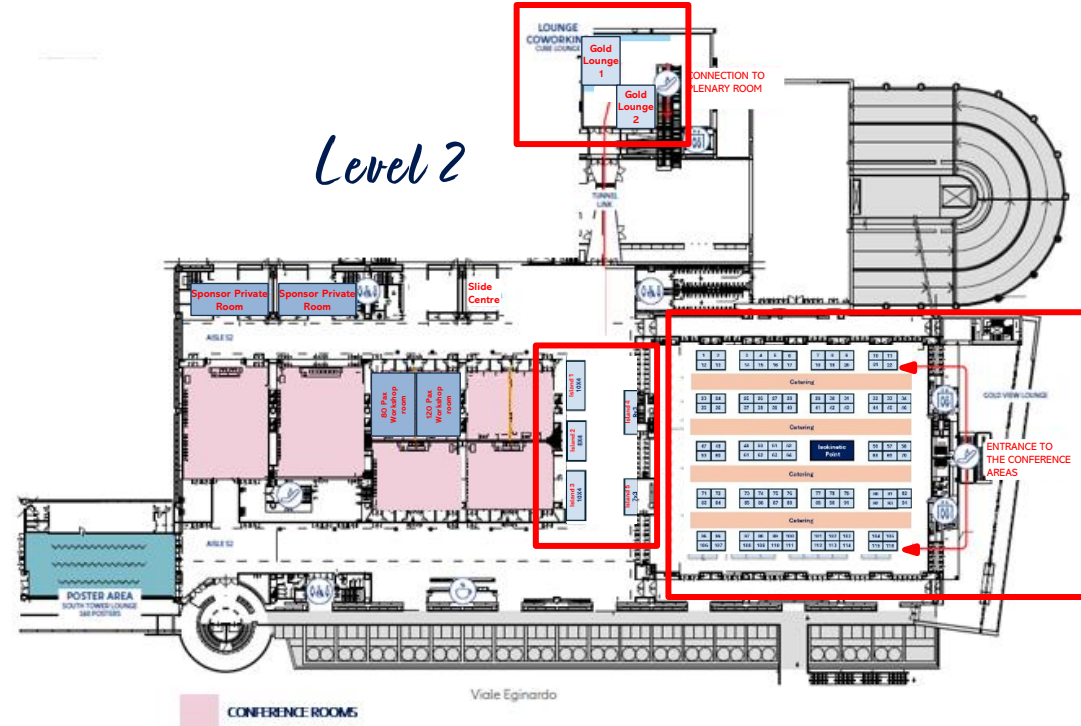
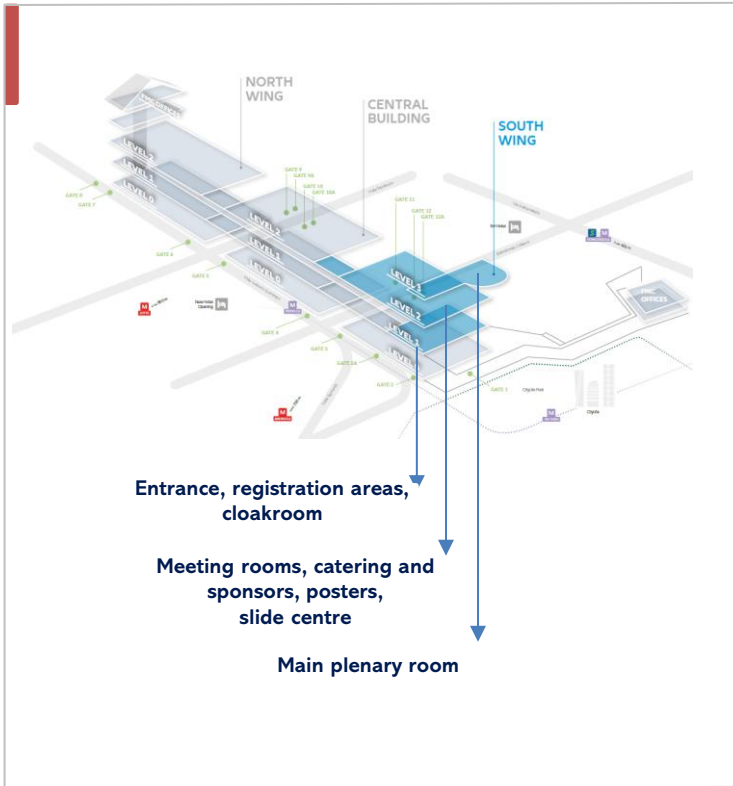


# THE WORLD OF *Sponsors*



# THE SPONSORS AREAS

## Overall view



# THE SPONSORS AREAS

## Overall view

### The Gold Room

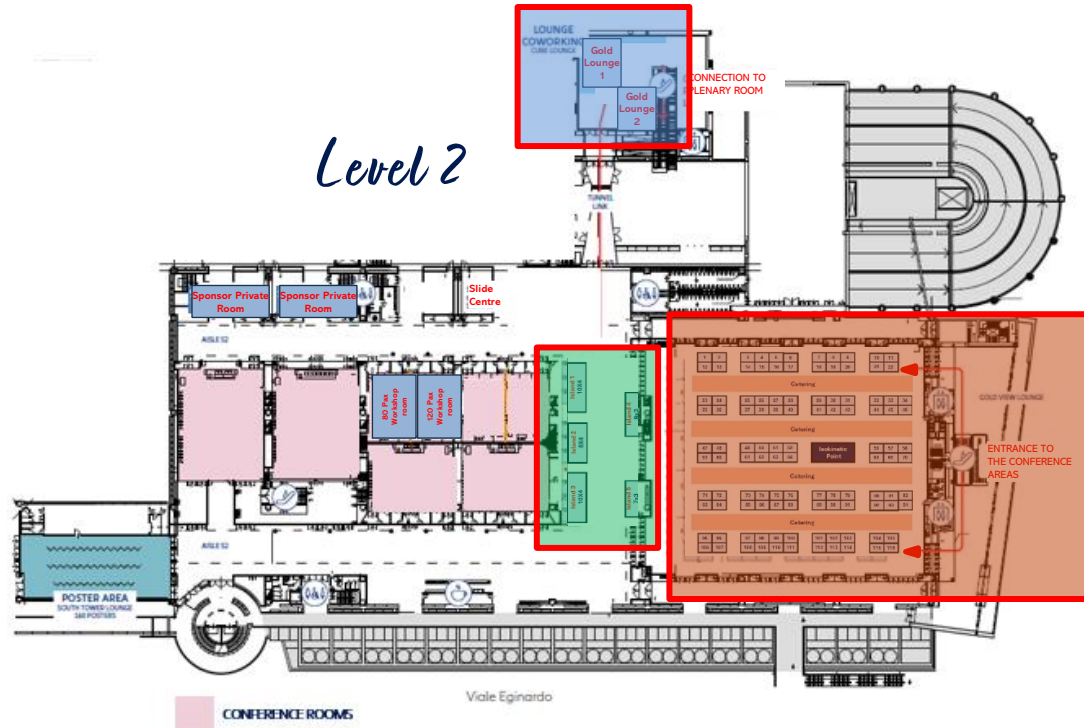
It is the only way to enter and exit the venue and is the area where the catering services will be organized.

### The Gold Foyer

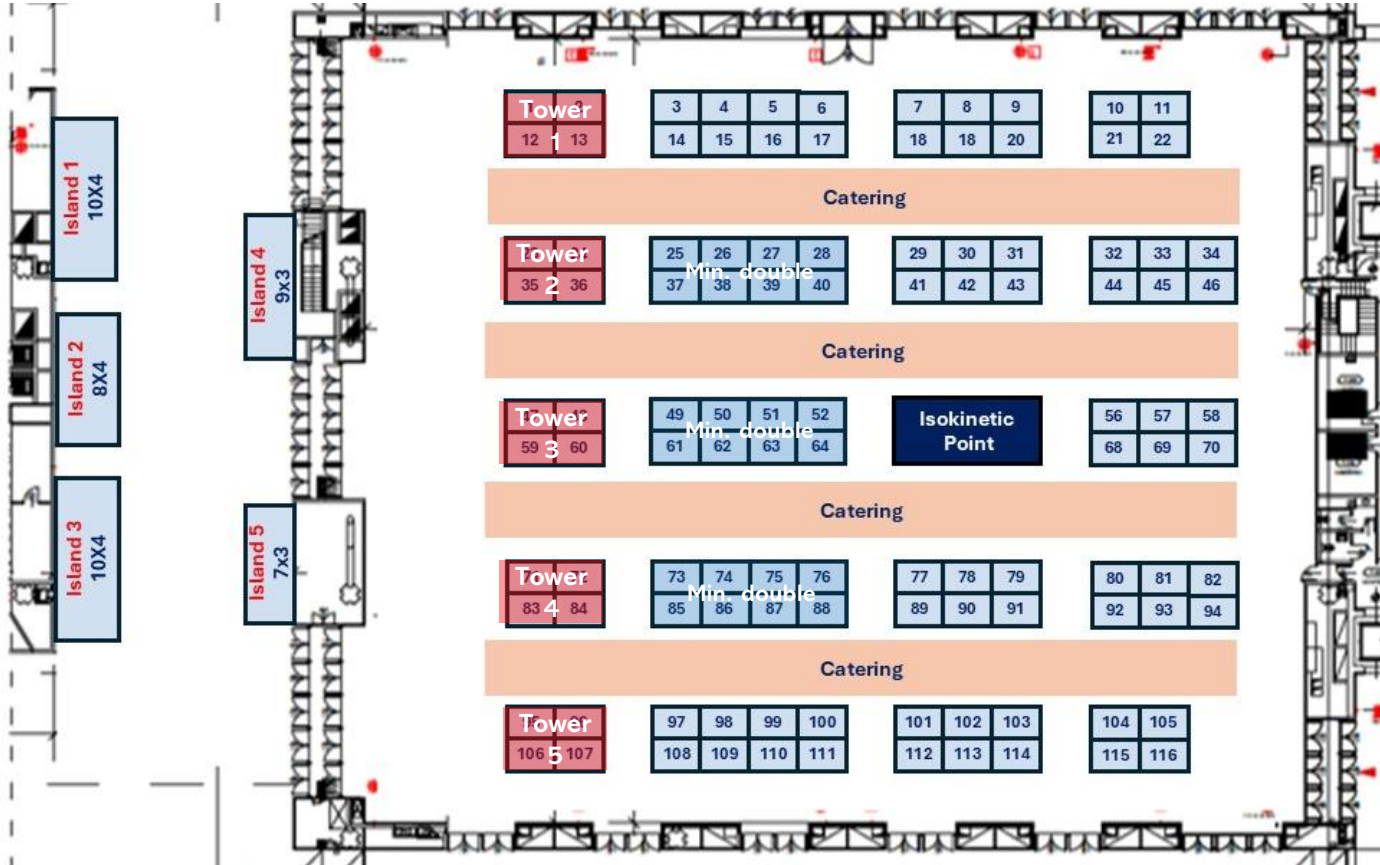
It is the main crossroad of the conference area. People will move all around to reach the meeting rooms, the slide center, and the poster areas... We can consider it as a "plaza"!

### The Cube Lounge

It is a huge foyer leading to the stairs to the main plenary room. It is ideal to organize a private open workshop area or a fun area where people can enjoy their spare time and relax.



# THE EXHIBITING AREA - Level 2



- ❑ *Single modules are 3x2 mt*
- ❑ *All booths must be 2,5 mt high*
- ❑ *Islands must be 3,0 mt high*

## AN OPPORTUNITY NOT TO BE MISSED:

### *The cube lounge areas*

More than 500 m<sup>2</sup> that participants will populate all the time to reach the main plenary 1600 seats room...

What could we create in this space?

An educational area?

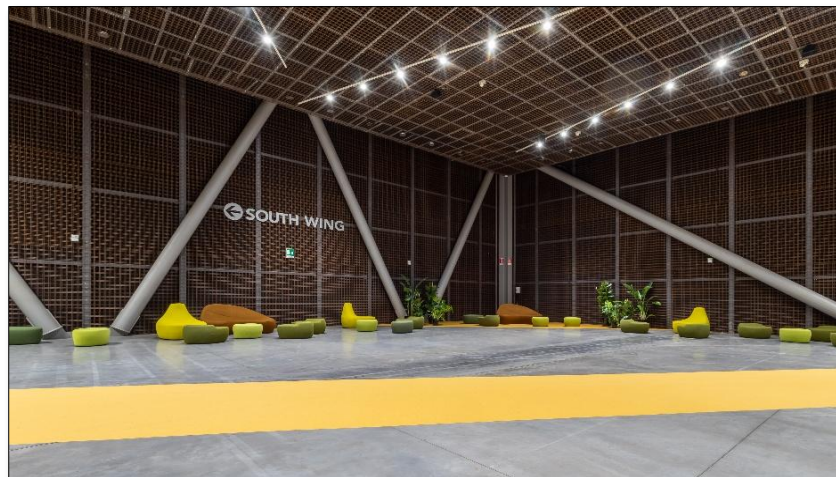
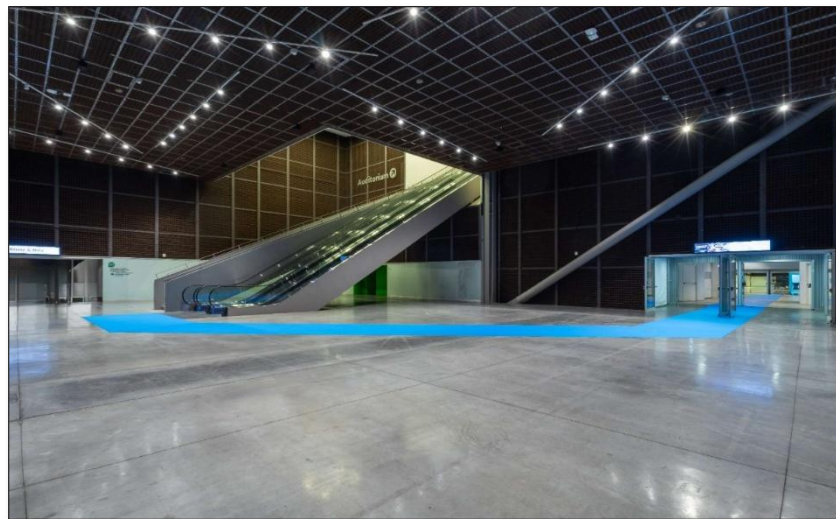
A relaxing lounge?

A football pitch?

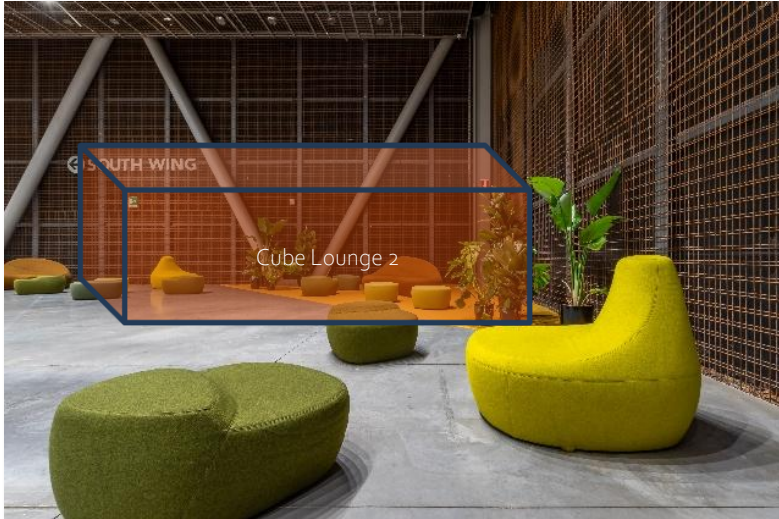
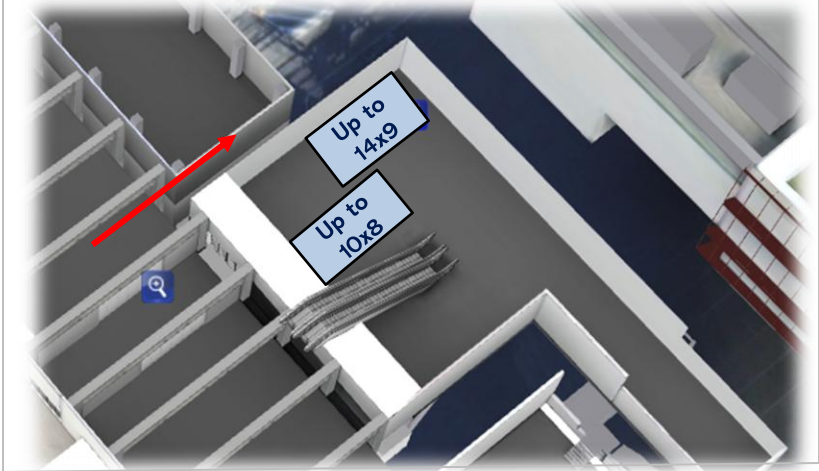
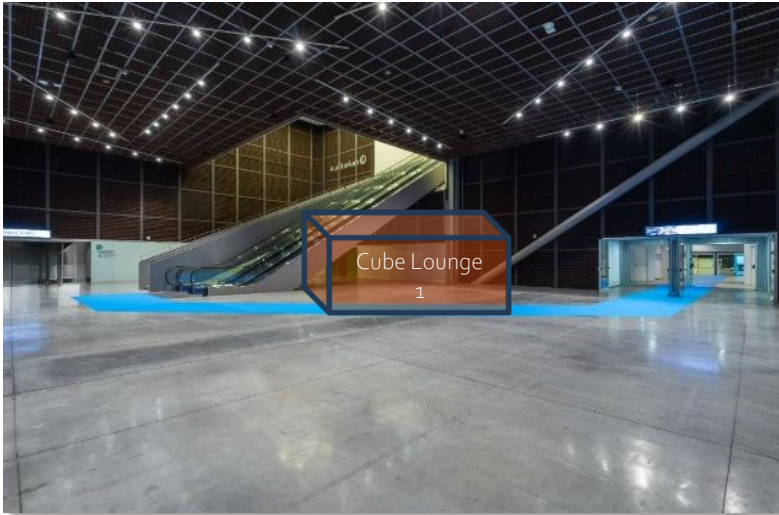
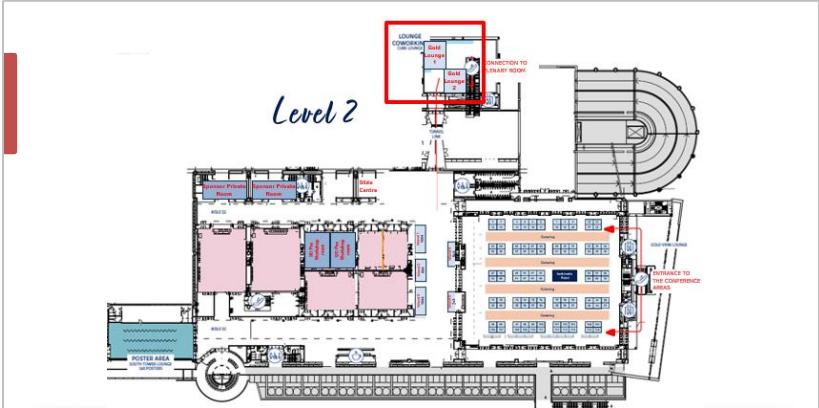
A play area?

Maybe you've got a good idea?

Contact us, and you can get the Cube Lounge areas at a very special fee!



# SPONSORS AREAS - *The cube lounge*



# SPACE RENTAL?

*Good to know!!*

Contact [f.schiassi@isokinetic.com](mailto:f.schiassi@isokinetic.com) to know available spaces and prices

## THE RENTAL INCLUDES

*Spaces are sold totally bare (no shell scheme or carpet included)*

*Standard power connection*

*Free wifi*

*No. 2 free staff passes/each 6 sqm module*

## ASSIGNATION OF EXHIBIT SPACE

*Spaces will be assigned on a “first come, first served” basis; once booked a space, Companies will be invited to settle the deposit to secure the allocation.*

## OFFICIAL 2027 REGISTRATION FEES

### FOR PROFESSIONALS

EARLY BIRD FEE: € 1.150

REGULAR FEE: € 1.490

### SPECIAL PRICES

## ARE AVAILABLE FOR SPONSORS

please contact  
[f.schiassi@isokinetic.com](mailto:f.schiassi@isokinetic.com)



# PERSONALIZE YOUR BOOTH

*As You Wish!*

The spaces are sold totally bare so, once confirmed your booth, you will receive personalized credentials by MilanoFiere to access your private platform and choose all items and services you want to purchase for your booth!



## ▶ Audiovisuals

Images are for illustration purposes only. Brand and model may vary depending on availability. All products are for rent.

LCD Monitors cannot be mounted on the wall on biministrated shell scheme panels.

All monitors may require an additional reinforcement panel to be mounted on the wall.

- Please remember that any rent order is confirmed only after the payment.
- Please take only note that any complaint should be sent within 48hrs from the service supplied. Otherwise it will not be taken in consideration.
- To submit a complaint, please use the [Claims](#) page, send us an email, or come to our Exhibitors Service Desk.

## ▼ LCD Monitor



LCD Monitor 32"  
W1912 07 84960 cm - 4,8 Kg  
€ 77,00 each



LCD Monitor 40"  
W1912 07 85030 cm - 7,5 Kg  
€ 204,00 each



LCD Monitor 48"  
W1912 07 85100 cm - 11,5 Kg  
€ 253,00 each



LCD Monitor 55"  
W1912 07 85270 cm - 15,4 Kg  
€ 380,00 each



LCD Monitor 75"  
W1912 07 84960 cm - 32,7 Kg  
€ 1,067,00 each



LCD Monitor 80"  
W1912 07 84743 cm - 36 Kg  
€ 1,320,00 each



LCD Monitor 90"  
W1912 07 84110 cm - 32 Kg  
€ 1,430,00 each



Wooden panel reinforcement to hang monitor  
€ 110,00 each

## DR SERVICES

ORDERS DELIVERIES CLAIMS INVOICING DATA USEFUL DOCUMENTS CONTACTS

### Build-up and break down

Opening Times, Official Freight Forwarder, Safety Responsible, Vehicle Passes, Staff Name Badges



### Audiovisuals

LCD Monitor, Audio, Ledwall - Videowall More

### Catering Services

Breakfast, Lunch, Non Alcoholic Drinks, Coffee and Tea, Water Cooler, Additional Catering Items, Custom Catering Service



### Computers and Peripherals

Technical Assistance, Equipment Rental

### Digital Printing Services

Graphic Services, Logo Printing on Fasciaboard



### Electrical Services

### Extra Time Work



### Fire Extinguisher

### Furniture

Chairs & Stools, Armchairs & Sofas, Tables, Reception Desks, Displays, Accessories, Shell scheme optionals



### Internet Connections

### Shell scheme included customization

Deadline: December 31, 2030



### Shell Scheme Package

Shell Scheme Packages, Shell Scheme Package

### Waste Collection



# The WORKSHOPS

Hiring a meeting room during the Conference, Companies have the chance to offer additional educational contents to the event, showing to an elite audience of delegates services or tools that are the results of thorough research and testing activity.

## MEETING ROOMS

- 80 seats
- 120 seats
- 200 seats

## THE FEE INCLUDES

Rental of a room for 60 minutes  
Standard AV equipment (screen and projection)  
IT assistance  
Registration fee for speakers (the free registrations can't be replaced with staff or guest registrations)





# PROMOTE YOUR COMPANY OR YOUR WORKSHOP IN the *Isokinetic social media channels!*

## Promotion Package

- Banner in pre-conference newsletter
- Banner in one daily newsletter
- Two stories on Isokinetic Instagram Official page



Welcome to ISOKINETIC CONFERENCE

DAY ONE begins. Let's make history.

Kalimera! Today, all eyes of the football medicine community are on ATHENS

The spotlights are on and the stage is set. Behind the scenes, our speakers are putting the finishing touches to their presentations, ready to share their insights and shape the future of our field. The anticipation is simply electric!

In just a few short hours, the doors of the Megaron will open, and the excitement will be palpable. It's finally time, everyone!

WELCOME to the 33rd ISOKINETIC CONFERENCE!

Over the next three knowledge-packed days, we will explore the latest in sports medicine with the goal of any rehabilitation: **Return to Performance.**

Today is about more than just learning. It's about connecting with fellow sports medicine professionals just like you. You won't just leave with notes - at the end of today, you'll leave with a vision for your practice and career.

### Final Programme Booklet

Your Conference Essential: The Final Programme Booklet

With multiple sessions happening at once, planning ahead ensures you won't miss what matters to you most.

**You'll receive a printed, full-color Final Programme Booklet inside your #Isok26 backpack** upon arrival, complete with a handy pen and notepad to keep track of key insights!

Download the digital version here to plan ahead of time:

**FINAL PROGRAMME**

### Ticket & ID

Don't Forget the Essentials!

Bring **proof of your conference ticket** (digital or printed) and **your ID**—you'll need your **ticket number** to pick up your badge and #Isok26 merch, including your backpack, at the designated registration desk - check your number to go to the correct desk

### Earn CME credits

The European Accreditation Council for Continuing Medical Education (EACCME®) will award 20.5 CME credits for attending the Isokinetic Conference. Please go to the Registration Area to collect your credits. Credits are reserved for Specialised Doctors.



# The PRIVATE ROOMS

Need to get a private chat with a possible stakeholder? Pleasure to arrange a private lunch for a selected group of your guests?

Ask for a private room, easily reachable by everybody.

Rooms are only two, so don't lose time, and book it soon!

BOOK FOR:

- Half day
- Full day





*Nice Ideas to be Visible*

# Support to ATTENDEES SERVICES

The services offered to attendees during the Conference are always highly appreciated by everybody, because they enrich the attendee's experience!

## WIFI SERVICE

Your support will be indicated on the onsite signage spread all over the venue

## SUPPORT TO TRANSFER SERVICES FOR SPEAKER

Every day, speakers move from and to the venue with a dedicated service of shuttles.

All speakers receive the timetable of transfers at their arrival, so don't lose the chance to welcome them, at their arrival, with such an appreciated service

## MOUSEPAD IN THE SPEAKERS SLIDE CENTRE

The slide centre is the main technical hub of the conference, where more than 500 speakers upload their presentations.

Grab their attention when reaching this room to prepare for their performance  
10 Mousepads must be provided by the sponsor

Cheap ways to be  
under the eyes!



## *Tips to improve* YOUR EXPOSURE

---

### ADVERTISING PAGE ON THE FINAL PROGRAM

Don't lose the chance to promote your brand or your workshop in the most consulted tool of the conference!

No. 3500 copies

### ITEM IN THE CONFERENCE BAG

Include in the Conference bag a flier or a gadget to tell something about you to everybody!

No. 3500 copies

The items must be provided by the sponsor



# BE PART OF THE *Venue*

Why don't be in the main visual branding of the venue?  
Your logo can be visible all day in many key points  
where participants will spend their time!

- Typology: PVC sheet
- Size: 600x300 cm
- Description: Digital printing on PVC

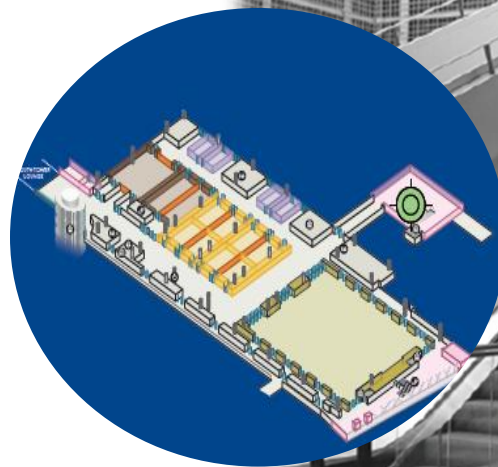
PLACEMENT:



# BE PART OF THE *Venue*

Accompany our participants to the main plenary room of the conference branding the mobile stairs!

- Typology: Decal sticker (n.4 sides)
- Size: 1 side
- Description: Digital printing on vinyl film



# OUR TOP PARTNERS



FOR SPONSORS SUPPORTING  
WITH MORE THAN 50.000€

Special recognition on the  
Final Programme and on the  
website

2 free pass for guest



FOR SPONSORS SUPPORTING  
WITH MORE THAN 60.000€

Special recognition on the  
Final Programme and on the  
website

3 free passes for guests  
1 free passes for staff



FOR SPONSORS SUPPORTING  
WITH MORE THAN 80.000€

Special recognition on the Final  
Programme and on the website

One box in one pre-conference  
newsletters

8 free passes for guests  
2 free passes for staff

Special mention in the Opening  
Ceremony



FOR SPONSORS SUPPORTING WITH MORE  
THAN 100.000€

Special recognition on the Final Programme  
and on the website

One box in two pre-conference newsletters

12 free passes for guests  
2 free passes for staff

Special mention in the Opening Ceremony

Special mention as Main Partner in the  
communication means

A special mention «Thanks to» in all our daily  
newsletters during the Conference

*Amounts are 22% VAT excluded*



*Be Part Of The  
Magic!*

Contact us anytime:  
Federica Schiassi  
[f.schiassi@isokinetic.com](mailto:f.schiassi@isokinetic.com)

[www.isokineticconference.com](http://www.isokineticconference.com)